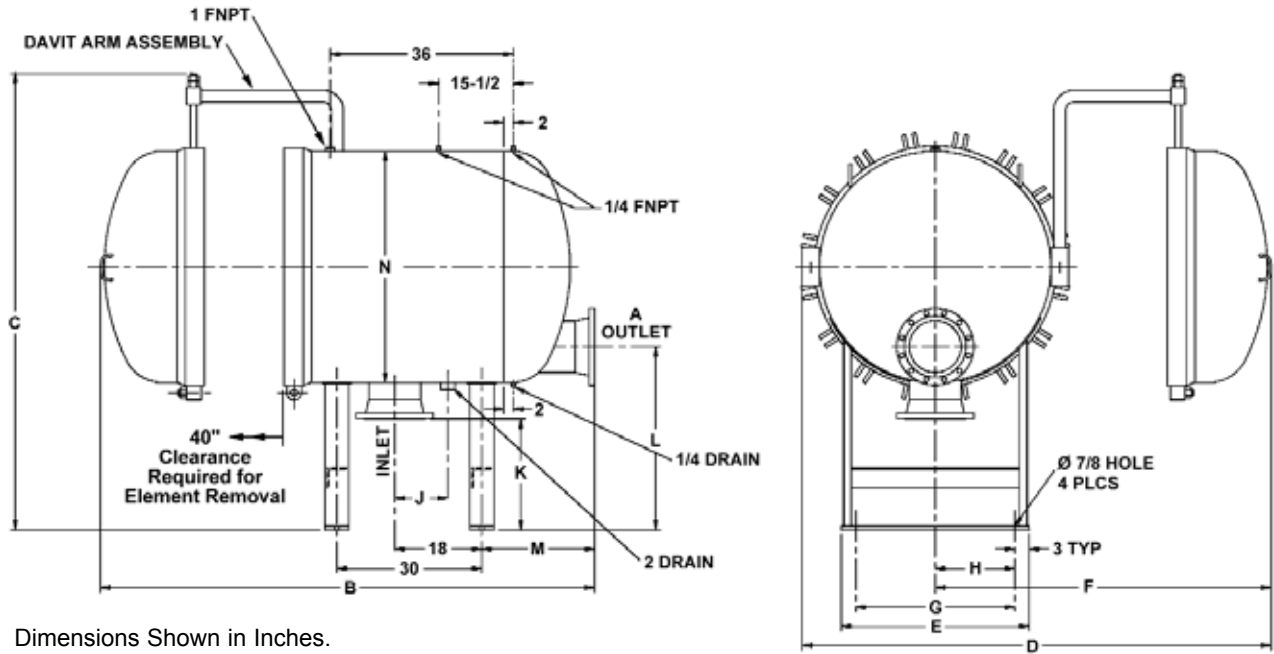


Dimensional Info for High Flow Multi-Cartridge *Horizontal* Housing



Dimensions Shown in Inches.

No. of Cartridges	A Inlet/Outlet	B	C	D	E	F	G	H	J	K	L	M	N
4	4	64-7/8	44-7/8	38-3/8	14-1/2	26-3/4	8-1/2	4-1/4	9	13	20-1/2	16	18
5	4	65-3/4	49-1/2	40-3/4	16	28-1/2	10	5	9	13	21-1/2	16-1/2	20
7	6	68-3/4	56-7/8	51-7/8	19-1/2	35-3/8	13-1/2	6-3/4	9	16	26	17-1/2	24
11	6	85	65-1/4	70-1/4	24	51-7/8	18	9	9	16	27	21-3/4	30
18	8	87-1/2	75-7/8	79-3/4	29	58-3/4	23	11-1/2	9	20	32	20-1/2	36
21	8	96-7/8	84	92-7/8	34	67-1/8	28	14	9	20	33	22	42
29	10	102-5/8	94-7/8	97-3/8	39	69-3/4	33	16-1/2	11	23	38	23-1/2	48

Due to our continuing program of product improvement, specifications are for reference only and subject to change without notice.

Construction Notes

Standard Construction Material

Carbon Steel

Sand blasted with painted enamel exterior.

316 Stainless Steel Wetted

Except the following non-wetted parts which are made of Carbon Steel:

- Grey Zinc Plated Bolts and Nuts
- Davit Assembly
- Leg Assembly
- Bolting Lug Assemblies
- Other Construction Materials Available

O-Ring Options

The following O-Ring options are available for the High Flow Multi-Cartridge Vertical Housings:

- Viton (standard)
- EPDM
- Buna
- PTFE Encapsulated Viton
- PTFE Encapsulated Silicone
- Other Materials by Special Order

Typical Part Number

H	H	U	11	Q	C	15	W	6	V
Series	Vessel Orientation	Material	Number of Elements	Cartridge Length	ASME Code	Pressure Rating	Connection Type	Connection Size	O-Ring Material